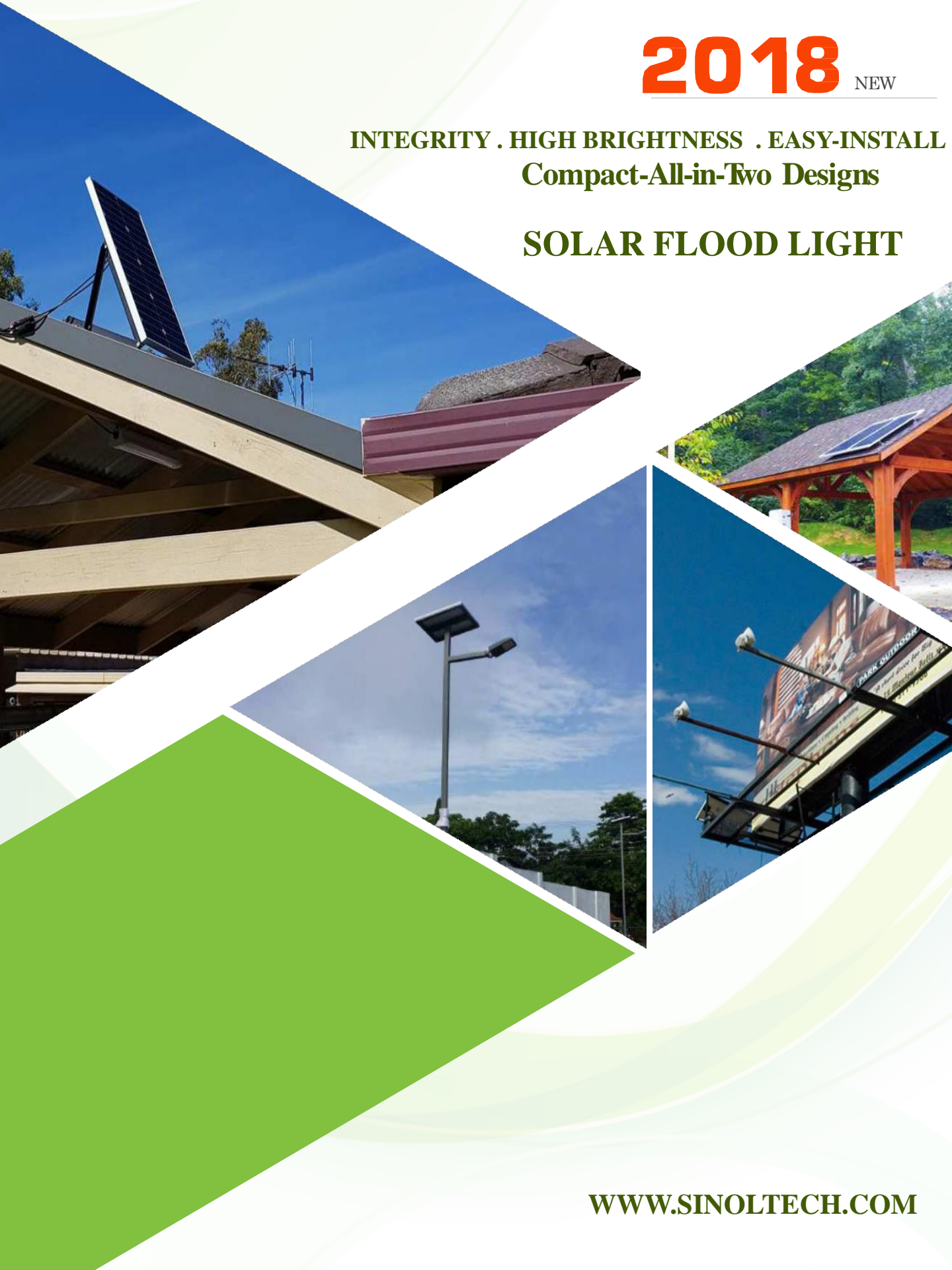


**2018** NEW

**INTEGRITY . HIGH BRIGHTNESS . EASY-INSTALL  
Compact-All-in-Two Designs**

**SOLAR FLOOD LIGHT**



**WWW.SINOLTECH.COM**

## All In Two(AIT) Solar LED Flood Light

15W | 20W | 30W | 40W | 50W | 60W

With Separate Solar PV



### Key Advantages

#### PROGRAMMABLE

Smart solar controller built-in, power brightness and lighting time are adjustable via remote controller.

#### LONG DISTANCE INSTALLATION

Using 25 OR 4mm<sup>2</sup> solar cable. It allows more than 35M from light head To solar panel. Make installation more easy.

#### EXTERNAL SOLAR PANEL

Solar panel separated from light allows to increase power to meet the solar radiations in different latitude and longitude.  
max 200W solar panel is allowed for 50W LED with 6200 lm output.

#### CONNECTION

MC4 female & female plugs directly to 18V solar panel. Quick and easy for connection. 25mm<sup>2</sup> power cord for less voltage drop.

#### COMPACT SYSTEM

Battery and solar controller, sensor are built-inside of light, only need to be connected to 18V system, NO more other operation, easy, simple and quick installation.



Remote Setting



Microwave Sensor



MC4 Plugs Connection



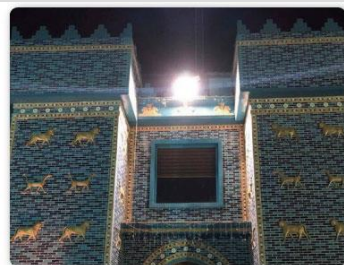
Lithium Battery



12 Hrs/Day  
130 LM/W

## Applications:

- \* Billboard Lighting
- \* Car Park & Perimeter Lighting
- \* Security & Entrance Lighting
- \* Signage & Billboard Lighting
- \* Construction Sites
- \* Rural & Remote Area Lighting
- \* Mining & Industrial Sites Lighting



## Model Selection:

Model No.	SN-S15W	SN-S20W	SN-S30W	SN-S40W	SN-S50W	SN-S60W
Fixture IP	IP67					
LED Power Max	15W	20W	30W	40W	50W	60W
Luminous Flux	>2,200lm	>2,800lm	>3,600lm	>5,200lm	>6,200lm	>7,200lm
Beam angle	140*70 Degrees					
Color Temp.	2700K ~ 6500K Optional					
CRI	>83					
LED Brand	SMD 0.2W	Philips SMD3030				
LED Qty	224 Pcs	48 Pcs	72 Pcs		90 Pcs	
Battery Capacity	195WH 12V	268WH 12V	391WH 12V	488WH 12V	548WH 12V	635WH 12V
Charge Time	6 Hours					
Max Discharge Time	>48 Hours					
Controller Type	PWM type with sensor		MPPT type with sensor			
Solar Panel(Poly)	40W 18V	50W 18V	60W 18V	80W 18V	100W 18V	120W 18V
V.mp. of PV	18V	18V	18V	18V	18V	18V
I.mp. of PV	2.22A	2.78A	3.33A	4.45A	5.56A	6.67A
PV Size(mm)	670*390*25	620*535*30	670*560*25	760*670*30	1000*680*30	1050*670*30
Flexible PV Option	Thin Film 40W Semi Flex 40W	Thin Film 52W Semi Flex 50W	Thin Film 65W Semi Flex 60W	Thin Film 79W Semi Flex 80W	Thin Film 105W Semi Flex 100W	Thin Film 144W Semi Flex 120W
Working Temp.	-20 ° C ~ +65 ° C					



Bill Free



Green Energy



Bug Free



Rechargeable



Eco Friendly

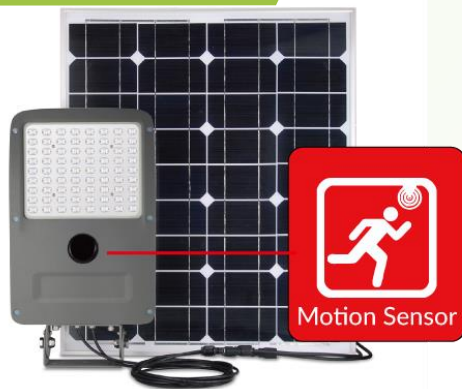


Free Maintain



Integration

## Motion Sensor



What is Microwave Sensor?

Motion sensor ( Including microwave sensor and PIR sensor) is adopted in this light in order to save more energy or used for security reason.

Energy saving mode is adjustable by the remote control easily.

Radar sensor is more sensitive than PIR sensor in much wider angle and longer distance, And it can be triggered easily with slight movements.

The best sensitive distance from people / object to light sensor should be within 12 meters.

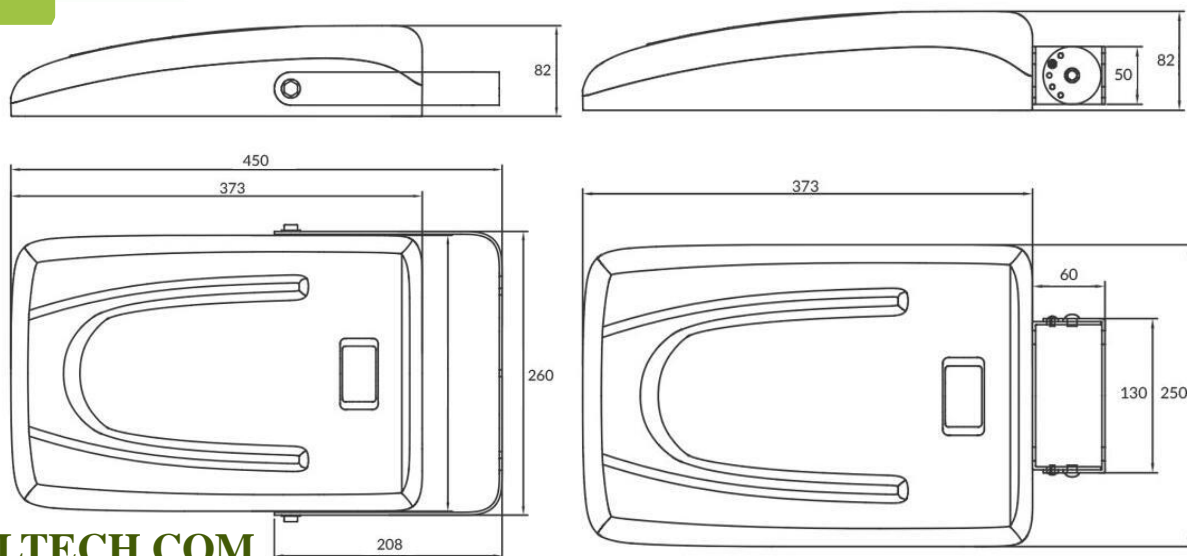
PIR sensor is optional

## Inner Structure



Notice: Solar led flood light has same internal structure as solar led street light

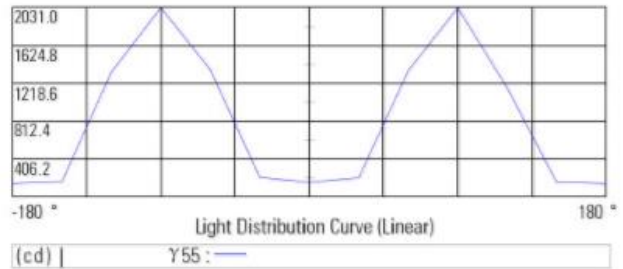
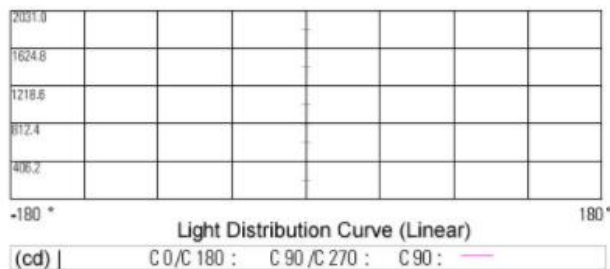
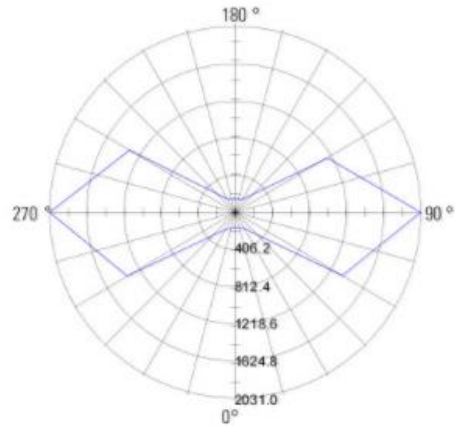
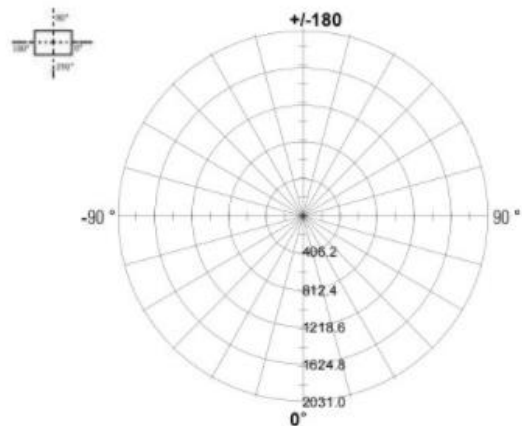
## Dimension



## IES DATA

Light Distribution Curve [ Unit : cd ]

Max Plane Light Distribution Curve [Unit: cd]



## Solar Radiation



The solar radiation (insolation) map is based on values from Meteornorm

### Proportion Between LED Light and Solar Panel. (For reference only.)

REGION	LIGHTING MODES	LED POWER	SOLAR PANEL	CHARGE TIME
● 2500	6H 100% + 6H 50%	10W	>20W	5 Hours
● 2000	6H 100% + 6H 50%	10W	>25W	5 Hours
● 1500	6H 100% + 6H 50%	10W	>30W	5 Hours
● 1000	6H 100% + 6H 50%	10W	>40W	5 Hours
● 500	6H 100% + 6H 50%	10W	>50W	5 Hours

## Detail View



• LUMENS

All in Two Solar LED Street Light is adopting big brand Philips SMD3030 1W as light source. What's more, more than doubled LED is used but LEDs are driven by lower current input. It achieves a super high lumens, up to 150lm/W practically. AIT 20W is equal to same lighting performance as ALL IN ONE 30W, The LED of All In One solar led street light is always used high power 1W with Epistar or Bridgelux LED. All in Two 30W is saying the total led consumption is 30W. All in One 30W is always saying the total quantity of led 1W is 30Pcs. the real power is always much less than power as declared. That is why all in two solar street light is much brighter than all in one type.



• SOLAR PANEL

The solar panel of AIT street light is separated from light head. It makes so convenient for customer to choose the right panel according to sunshine radiation of local environments. This is quite necessary especially customers requires 100% power for whole night. For example, AIT 20W can come with 40W solar panel if does not need long and brightness for whole light, and also AIT 20W can come with 100W solar panel for the area where is lack of sunshine very much, like North of Canada.

AIT solar street light always come with a motion sensor, and only work with 30%+100% for whole 12 hours. never support 6 hours 100% brightness+6 hours 100% which is the most requirements for big projects.

Thanks to separated solar panel, Customer can adjust the position of solar panel in horizontal and vertical position freely and easily. This allows solar panel can be used with the highest efficiency as possible in the best position. Customer can purchase solar panel from Auroras, or buy from their ready supplier, or use solar panel in stock. More flexible for business. What's more, Solar panel and solar light head are connected by MC4 which is the universal connector for solar panel. Distance from solar panel to light is max 40M. Lights can be installed far away from solar panel. Lighting will be anywhere, anytime.

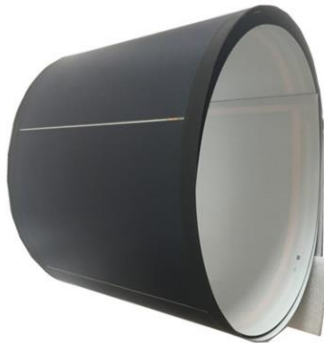
## PV Option



**LED Flood Light  
with Normal PV**



**LED Flood Light  
with Flexible PV**



**LED Flood Light  
with Semi Flex PV**



**SINOLTECH ENERGY LIMITED**  
**SHANDONG SINOLTECH INTERNATIONAL CO., LTD**



**SINOLTECH**

**INTEGRITY . HIGH BRIGHTNESS . EASY-INSTALL**

**One-Stop Solar Energy Solution Provider**

**SINOLTECH ENERGY LIMITED**  
**SHANDONG SINOLTECH INTERNATIONAL CO., LTD**  
**International Marketing Manager: Susan LIU**  
**A: A1-3-712, East 8 District Entrepise Mansion, Licheng**  
**District, Jinan 250000, CHINA**  
**P: +86 153 1880 7707 | E: susan@sinoltech.com |**  
**W: www.sinoltech.com**  
**Skype: SINOLTECH | WhatsApp: +86 153 1880 7707**