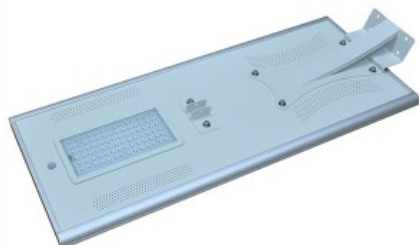


# 80W All In One Solar Light



## 80W ALL IN ONE SOLAR LIGHT

Application: For Street Lighting, Square and Residential Lighting.

Model No.: SNSTY-280

80W LED Integrated with 100W PV and 60AH Battery, Cell Phone APP Control

### General Specification

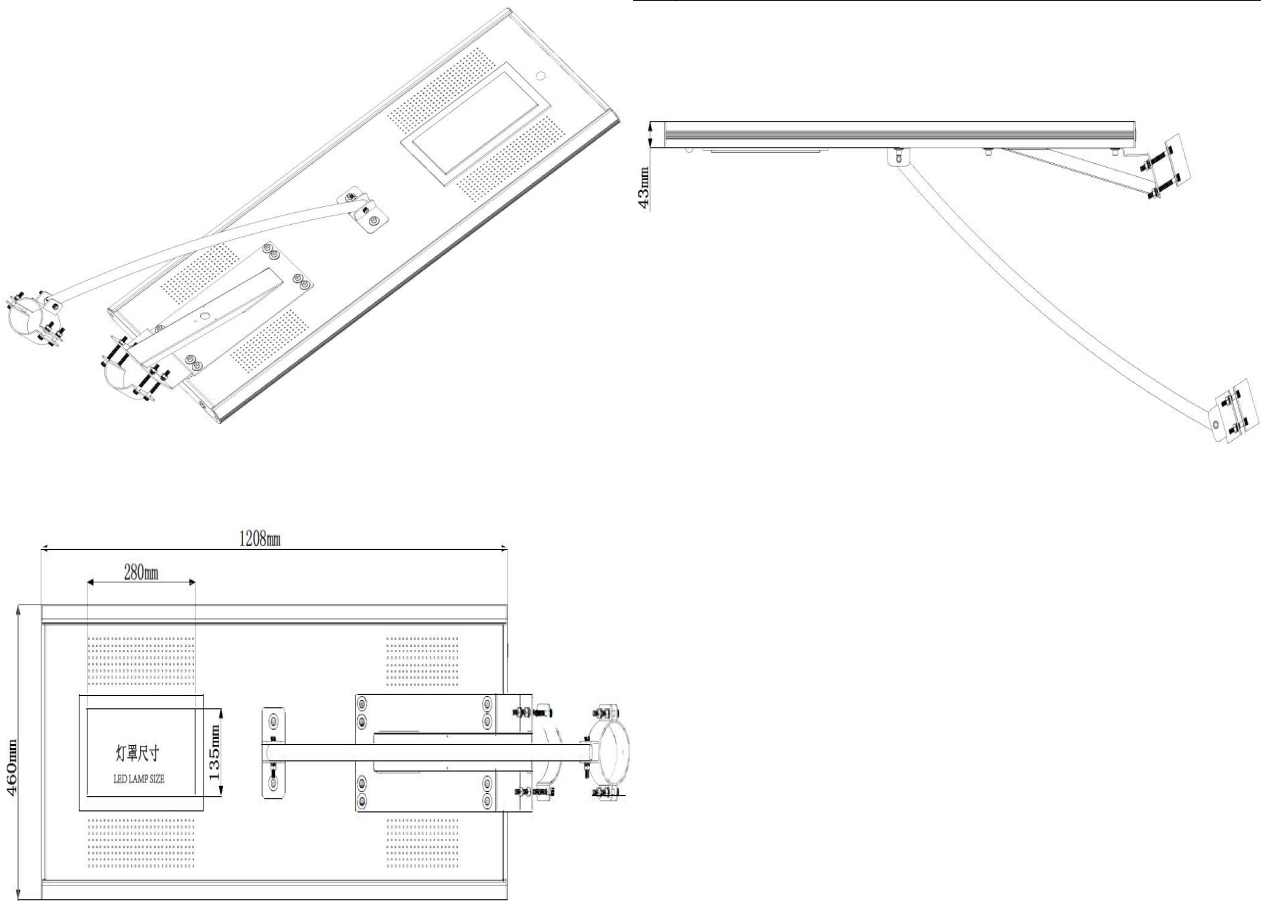
LED power	80W
Solar panel	100W, Cell brand: Solarworld
Lithium Battery	60AH Lithium
Lumen	8500~9000lm
Mounting height	8-9m
Mounting distance	35~40m for one-way road, 70-80m for two-way road, intercross distance.
Working Method	Timer control, Motion sensor?APP
Waterproof degree	IP65
LED Beads Qty	81; LED Brand: Bridgelux 45
CCT	3000~6000K
Working Temp.	-30~+60C
Working Humidity	15~90%RH

### Physical map



Packing Detail

Product size/Weight	1210*460*45mm/21.0 KG
Pack size/Volume	1320*510*200mm/0.135CBM
Gross Weight	24KG



[Download DATA SHEET](#)

Product link : <https://www.sinolsolar.com/80w-all-in-one-solar-light.html>